

EADON
LOCKWOOD
& RIDDLE
ESTD 1840

9 Lizzie Lane

Sheffield, S3 8AZ

Price Guide £425,000



4



3

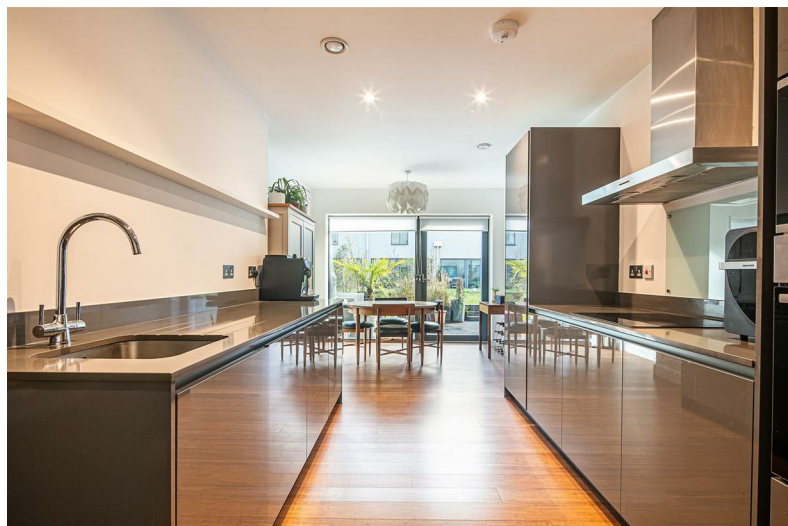


1



C

9 Lizzie Lane



Description

GUIDE PRICE £425,000 to £450,000

Nestled in the highly sought-after Little Kelham development on Lizzie Lane, Sheffield, this stunning four-bedroom townhouse offers a perfect blend of modern living and stylish design. Recognised by Time Out Magazine as one of the trendiest places to reside, this property is spread over three thoughtfully designed levels, providing ample space for both relaxation and entertainment. These eco-friendly houses benefit from solar panels, bamboo flooring throughout, luxury kitchens and bathrooms and a large garage with parking for an SUV and additional workshop/storage space.

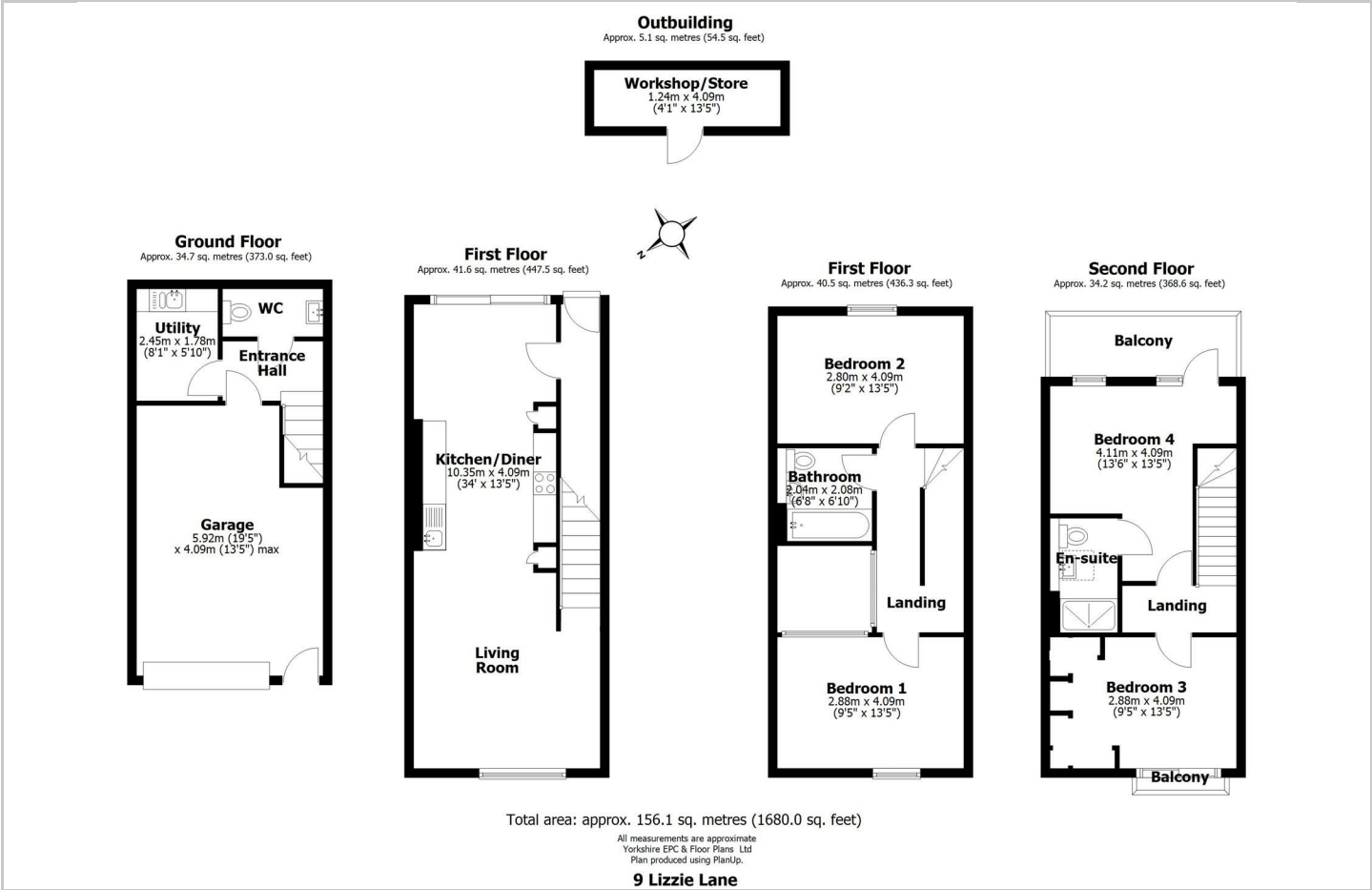
Book a viewing today with ELR on 0114 2683388.

- Sold via ELR Premium (Buyers Fee of £595 inc VAT applies)
- GUIDE PRICE £425,000 to £450,000
- Bamboo flooring throughout
- Balcony off master suite
- Trendy Little Kelham area
- Four spacious bedrooms
- Bespoke kitchen design
- Terrace with garden views
- Large garage for SUV
- Close to bars and restaurants

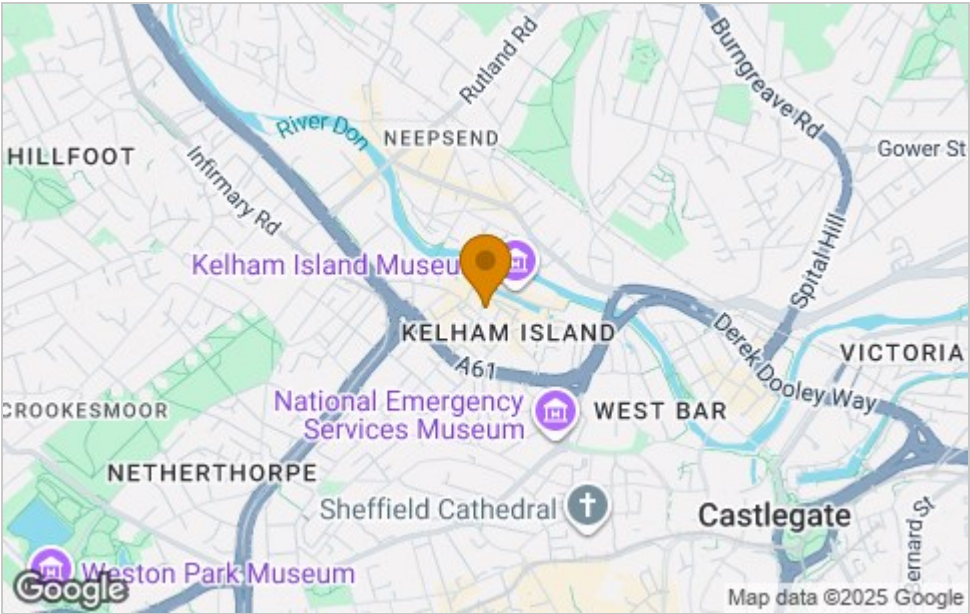




Floor Plan



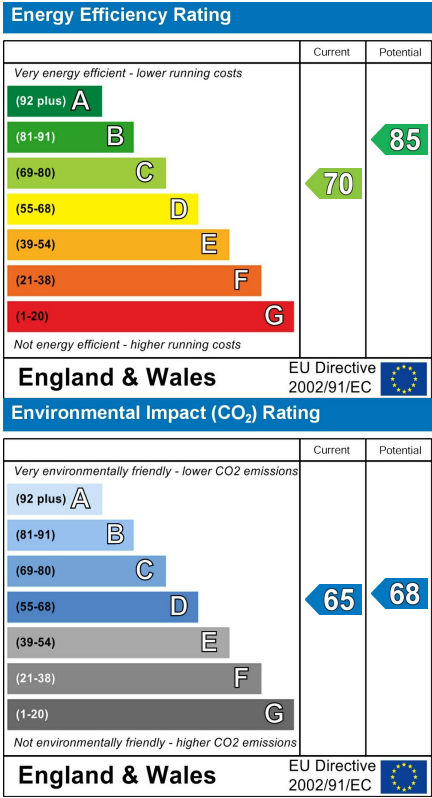
Area Map



Viewing

Please contact our ELR Banner Cross Office on 0114 268 3388 if you wish to arrange a viewing appointment for this property or require further information.

Energy Efficiency Graph



These particulars, whilst believed to be accurate are set out as a general outline only for guidance and do not constitute any part of an offer or contract. Intending purchasers should not rely on them as statements of representation of fact, but must satisfy themselves by inspection or otherwise as to their accuracy. No person in this firms employment has the authority to make or give any representation or warranty in respect of the property.